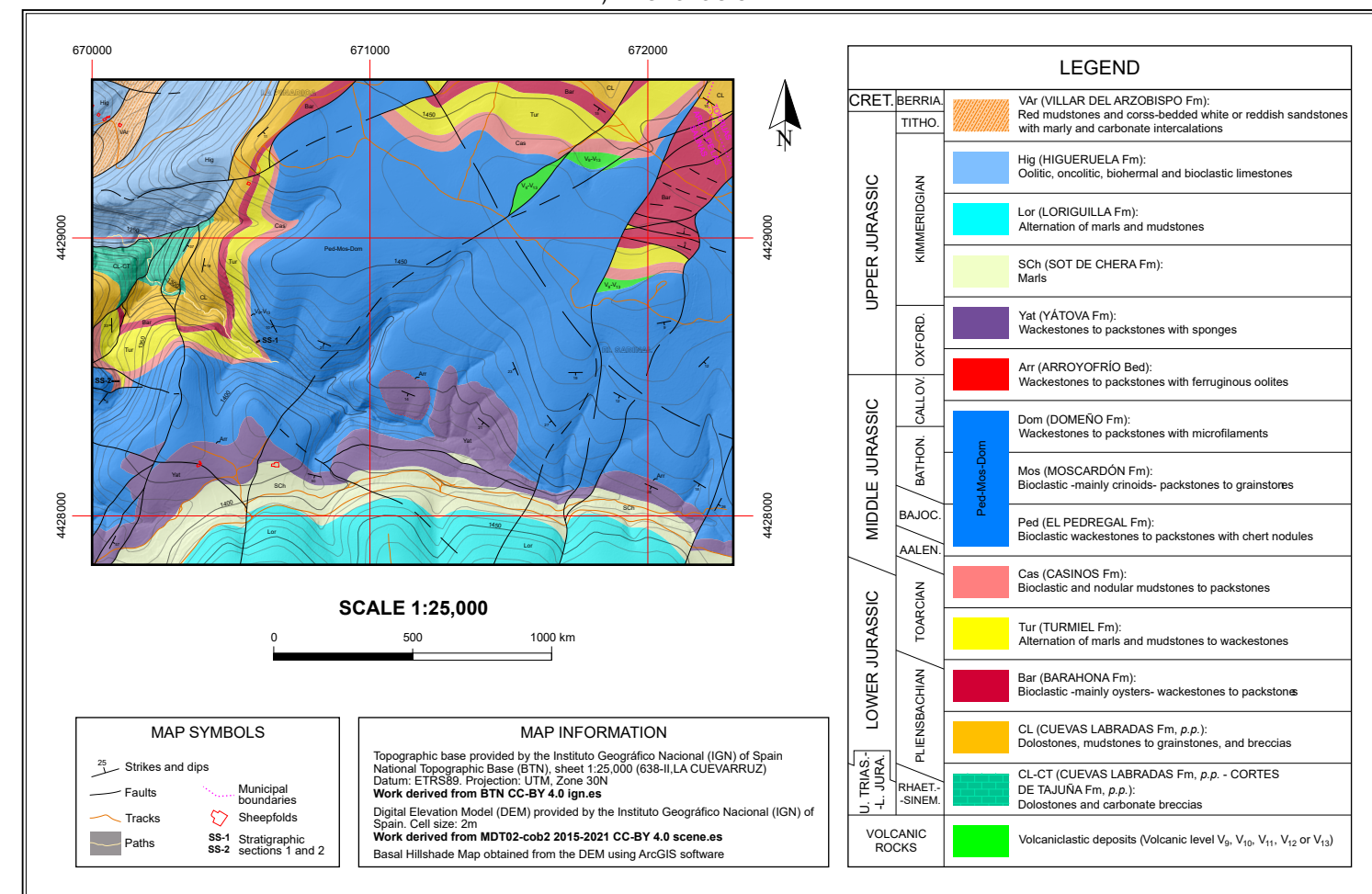


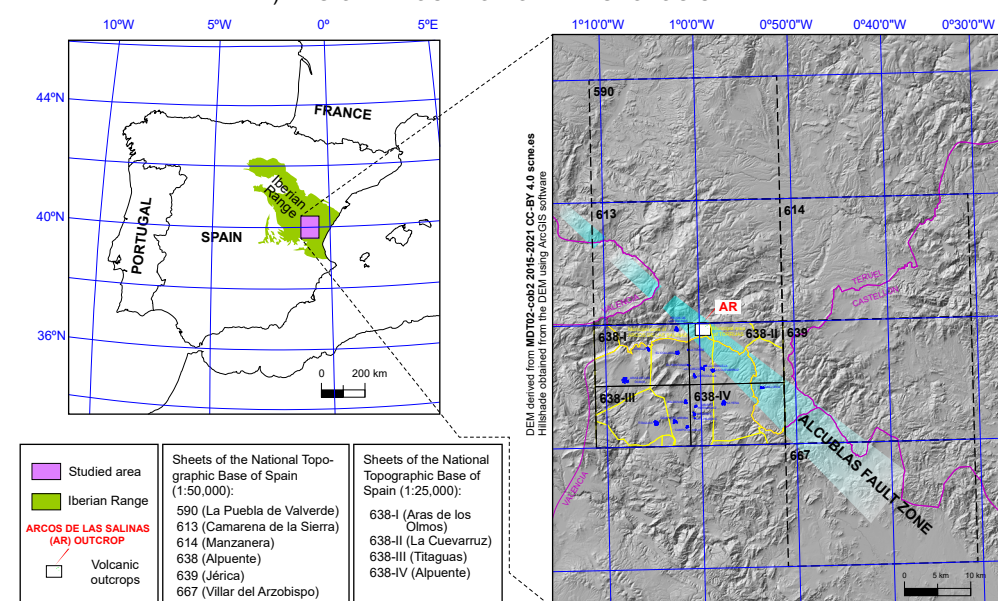
GEOLOGICAL MAP OF THE **ARCOS DE LAS SALINAS** OUTCROP (SE IBERIAN RANGE, SPAIN)

J. EMILIO CORTÉS
Departamento de Geodinámica, Estratigrafía y Paleontología, Facultad de Ciencias Geológicas, Universidad Complutense de Madrid
jocortes@ucm.es

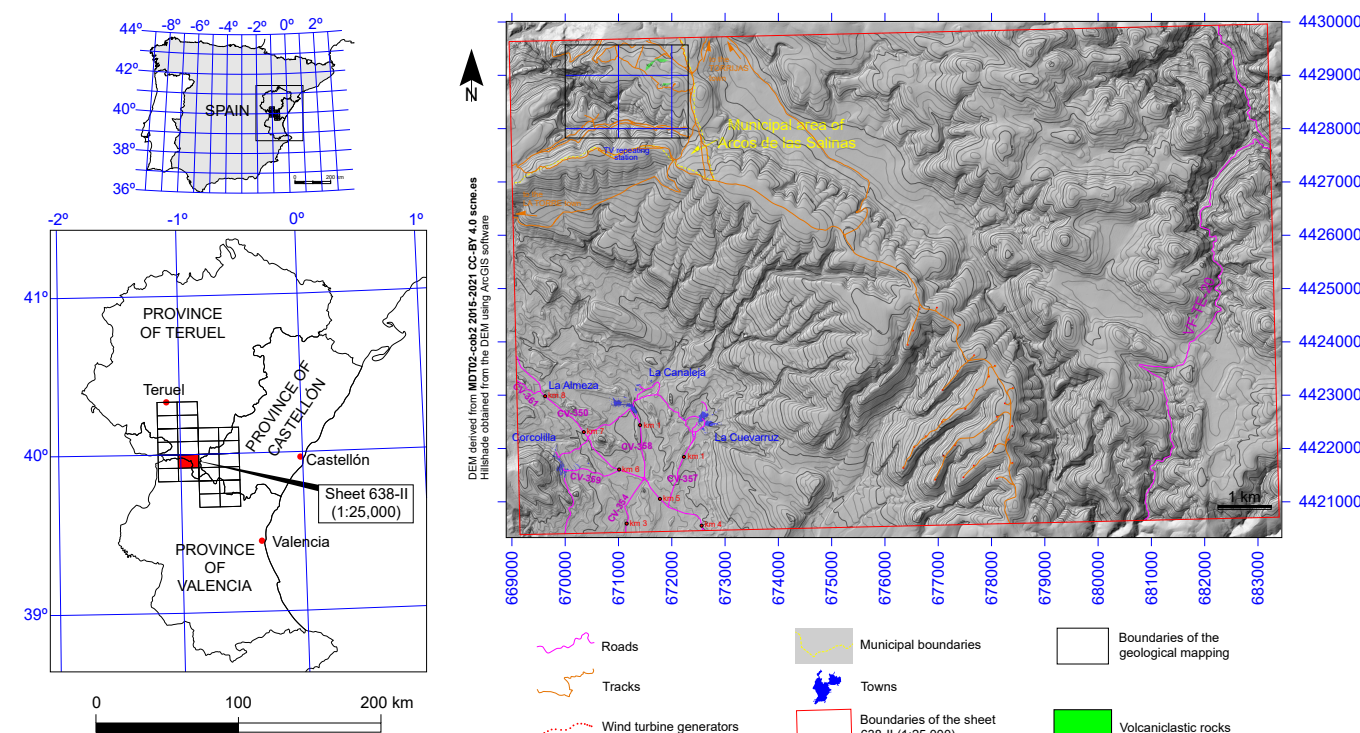
1) 2D GEOLOGICAL MAP



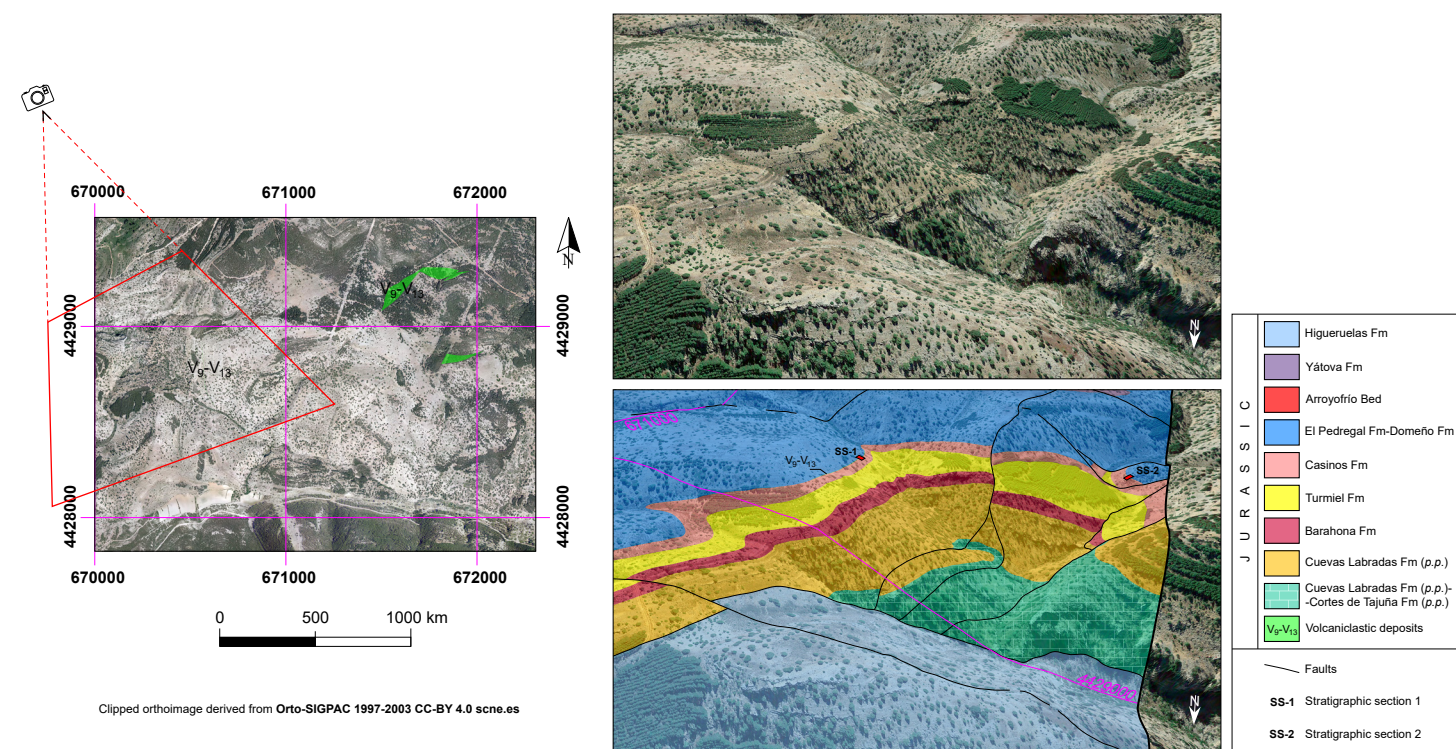
2) REGIONAL LOCATION OF THE GEOLOGICAL MAP



3) LOCATION OF THE GEOLOGICAL MAP IN THE SHEET 638-II (1:25,000)



4) 3D GEOLOGICAL MAP (WESTERN PART OF THE ABEJUELA OUTCROP) WITH GOOGLE EARTH



5) STRATIGRAPHIC SECTIONS SHOWING THE SEDIMENTARY GAP IN WHICH THE VOLCANIC LEVEL IS INCLUDED

